

reagents & CHEMICALS

runSAFE

The runSAFE range comprises four stain and loading dye combinations to visualize electrophoretic mobility of a wide range of DNA in agarose gels.

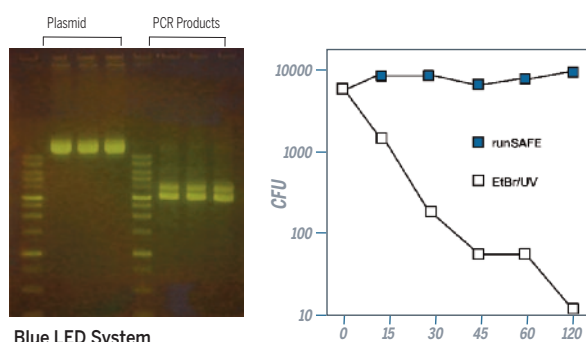
runSAFE is conveniently supplied in a 6x loading dye which is mixed with 5 parts double-stranded DNA before loading onto an agarose gel. runSAFE is non-toxic, safe for the environment and can be disposed of in the regular laboratory waste without using expensive decontamination methods. runSAFE is sensitive and binds DNA to detect as little as 0.2ng DNA per band within a gel; while gel imaging is best performed using the amber emission filter found on the bluVIEW lid or runDOC filter slide. The runSAFE Range is comprised as follows::

- runSAFE – general purpose stain for DNA ranging from 50bp markers to large super-coiled plasmid
- runSAFE-PLUS500 – for DNA larger than 500bp in size
- runSAFE-2000 – for DNA vectors and inserts ranging from 500-2000bp
- runSAFE-500 – for small DNA fragments, PCR products, sequence tracts and primers less than 500bp

KEY FEATURES

- Safe – all four runSAFE stains have ultra-low toxicity (LC>5000mg/kg) and lack cell permeability
- Convenient – each stain is supplied as a ready to use 6x Loading dye; simply add 1 part stain to 5 parts DNA, mix and load your gel
- Fast – no time-consuming post-staining or de-staining of gels is required.
- Sensitive – very low background staining of the gel; detects as little as 0.2ng DNA per band
- Flexible – each stain may be used with Blue or UV light

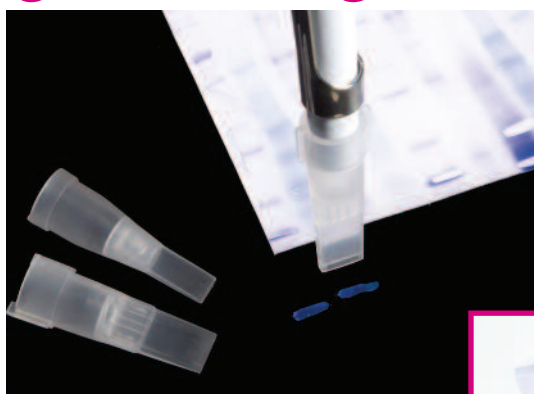
runSAFE - less DNA damage, improved cloning efficiency



Blue LED System

Slower migrating species, indicative of a linear or relaxed circular vector, resulting from DNA nicking or strand breaks, are significantly reduced in DNA plasmid mixed with run-SAFE and exposed to blue light. The concentration of nicked DNA plasmid increases significantly after 8' of exposure to EtBr and UV irradiation.

gel cutting tips



Gel Excision Tips offer a convenient and efficient one handed method of removing bands using a simple and rapid two-step process. The tips, in two sizes, 4.0 x 1mm and 6.5 x 1mm, cut directly into agarose or acrylamide gels, so eliminating cross contamination between samples. Alternative methods which require multiple steps including washing or rinsing are slow and tedious. These tips allow a safe and efficient one handed operation, with a push button gel and tip release, providing researchers with uniform extractions. Tips fit standard 1000µl pipettors and are available in bags and racks.



ORDERING INFORMATION

runSAFE	Description	Tracking Dyes	Size Range
CSL-RUNSAFE	runSAFE stain, 1ml	Bromophenol Blue, Xylene Cyanol FF, Orange G	50bp – 20Kb
CSL-RUNSAFEPLUS500	runSAFE-PLUS500 stain, 1ml	Bromophenol Blue, Xylene Cyanol Blue	>500bp
CSL-RUNSAFE2000	runSAFE- 2000, 1ml	Xylene Cyanol Blue, Orange G	500-2000bp
CSL-RUNSAFE500	runSAFE-500, 1ml	Orange G	<500bp

GEL EXCISION TIPS

CSL-GELX4	Rectangular Tips - 6.5mm x 1mm, bag/250	CSL-GELX6.5	Rectangular Tips - 4.0mm x 1mm, bag/250
CSL-GELX4 RACK	Rectangular Tips - 6.5mm x 1mm, 5x racks of 48	CSL-GELX6.5RACK	Rectangular Tips - 4.0mm x 1mm, 5x racks of 48