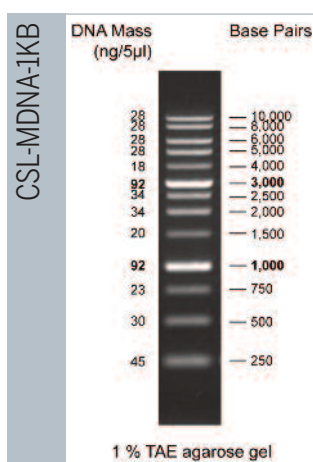
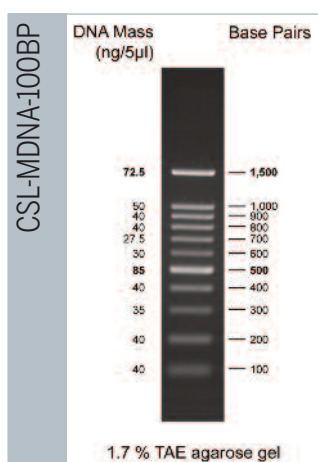
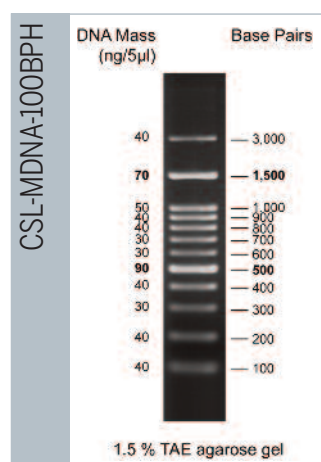


dnalADDERS

Pre-made and containing loading dye for immediate use, Cleaver Scientific's ready-to-use DNA markers are specially formulated to run accurately and produce sharp, well defined ladders.

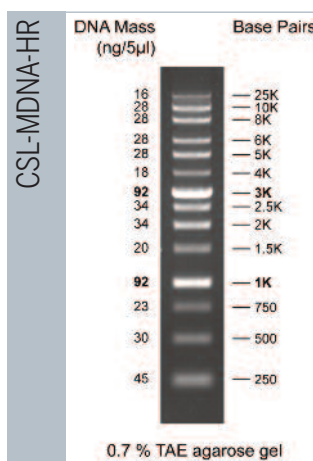
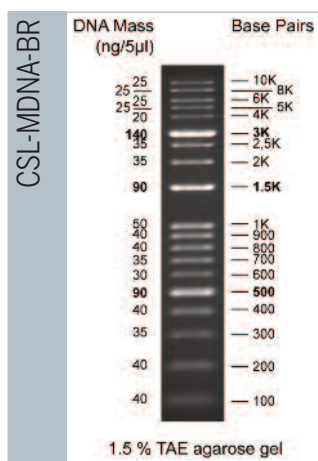
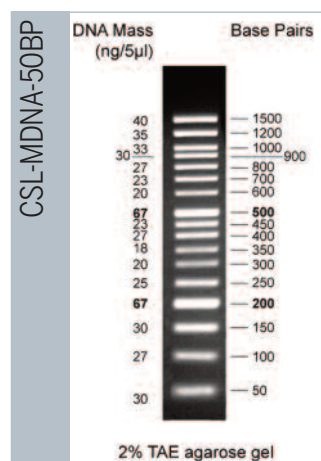
Available in six molecular weight ranges and composed of discrete marker fragments isolated from restriction-digested proprietary plasmids, each DNA marker will remain stable for up to 6 months at room temperature and 12 months if kept in the fridge at 4°C. Each marker contains high intensity reference bands and may be used to perform size comparisons with DNA molecules ranging from the smallest of PCR fragments to large, linearised cosmid vectors.



KEY FEATURES

- Ready to use
- Crisp band patterns
- Includes bromophenol blue for ease of use
- Stable at room temperature

REQUEST
A FREE
SAMPLE



Please Note: Ladder banding patterns subject to change, identifiable range will remain the same

ORDERING INFORMATION

Cat. No.	CSL-MDNA-100BPH	CSL-MDNA-100BP	CSL-MDNA-1KB	CSL-MDNA-50BP	CSL-MDNA-BR	CSL-MDNA-HR
Size Range	100-3000bp	100-1500bp	250bp-10kb	50-1500bp	100bp-10kb	250bp-25kb
Number of bands	12	11	13	17	19	14
Reference bands	500, 1500bp	500, 1500bp	1Kb, 3kb	200, 500bp	500bp, 1.5 & 3kb	1Kb, 3kb
Package concentration	54µg/500µl vial	50µg/500µl vial	50µg/500µl vial	56µg/500µl vial	86µg/500µl vial	52µg/500µl vial
Storage	----- 6 months at 25°C, 12 months at 4°C & 24 months at - 20°C -----					
Recommended loading vol.	5µl/well	5µl/well	5µl/well	5µl/well	5µl/well	5µl/well
Tracking dyes	Orange G, Xylene Cyanol FF, Bromophenol Blue					
Source	proprietary plasmids and PCR fragments phenol-extracted following restriction digestion and dissolved in 10mM Tris-HCl (pH 8.0) and 10mM EDTA					