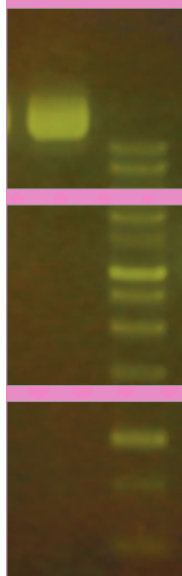


# runSAFE

general purpose stain for DNA ranging  
from 50bp to large supercoiled plasmid



**runSAFE comprises  
a stain and  
loading dye  
combination** to  
visualise electro-  
phoretic migration  
of a wide range of  
double stranded  
DNA fragments in  
agarose gels.



- **Safe** – runSAFE stain has ultra-low toxicity (LC<sub>50</sub>>5000mg/kg) and lacks cell permeability
- **Convenient** – supplied as a ready to use 6x Loading dye; simply add 1 part stain to 5 parts DNA, mix and load your gel
- **Fast** – no time-consuming post-staining or de-staining of gels is required
- **Sensitive** – very low background staining of the gel; detects as little as 0.2ng DNA per band
- **Flexible** – may be used with Blue or UV light
- **runVIEW™ compatible** – perfect for use with the runVIEW™ real-time horizontal gel electrophoresis system

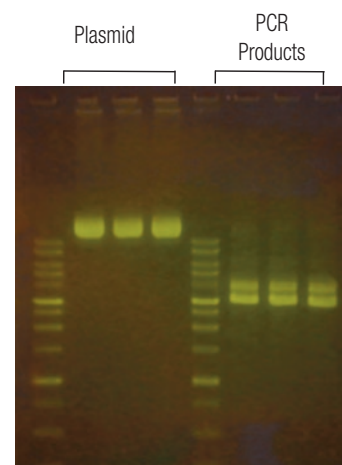
runSAFE is a high sensitivity all-in-one Loading dye and DNA stain that enables visualisation of a wide range of double stranded DNA fragments in agarose gels

runSAFE is conveniently supplied in a 6x loading dye which is mixed with 5 parts double-stranded DNA before loading onto an agarose gel. runSAFE is non-toxic, safe for the environment and can be disposed of in the regular laboratory waste without using expensive decontamination methods. runSAFE is sensitive and binds DNA to detect as little as 0.2ng DNA per band within a gel. Gel imaging is best performed using the amber emission filter found on the bluVIEW lid or runDOC filter slide and blue light. runSAFE comprises:

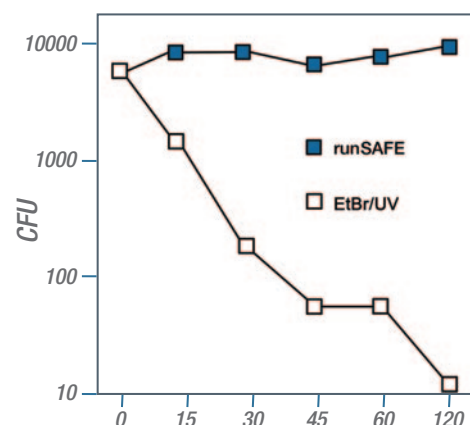
- general purpose stain for DNA ranging from 50bp to large super-coiled plasmid.

## runSAFE -

less DNA damage,  
improved cloning efficiency



Blue LED System



Slower migrating species, indicative of a linear or relaxed circular vector, resulting from DNA nicking or strand breaks, are significantly reduced in DNA plasmid mixed with run-SAFE and exposed to blue light. The concentration of nicked DNA plasmid increases significantly after 8' of exposure to EtBR and UV irradiation.

### ORDERING INFORMATION

runSAFE	Description	Tracking Dyes	Size Range
RUNSAFE	runSAFE stain, 1ml	Bromophenol Blue, Xylene Cyanol FF, Orange G	50bp – 20Kb

### THISTLE SCIENTIFIC LTD

Unit 41, Somers Road Industrial Estate,  
Rugby, CV22 7DH  
United Kingdom

T\_ +44 (0)1788 565300  
E\_ ENQUIRIES@THISTLESCIENTIFIC.CO.UK  
W\_ WWW.THISTLESCIENTIFIC.CO.UK